



VEERA OJAS

PARRA, NORTH GOA

MORE THAN 40 YEARS OLD  
**TRUST OF**  
VEERA DEVELOPERS





## The Introduction



VEERA  
OJAS

Similar to how the term "**Ojas**" symbolizes vitality and serves as a fundamental source of energy for both the body and mind, "**Veera Ojas**" represent residences that embody a harmonious environment and abundant positive energy, offering an unparalleled living experience, in one of the most posh location of Goa - **Parra**.







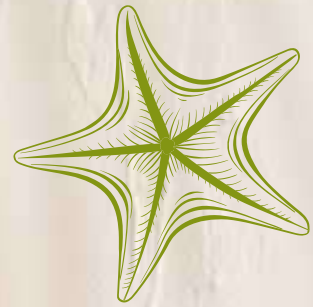
*Goa*  
one of the most  
peaceful & romantic  
place on earth.



*Goa*  
stirs the heart, inspires  
the imagination & brings  
eternal joy to the soul.







Experience a luxurious,  
yet serene lifestyle  
few will ever know.







Enjoy top-of-the-line contemporary interiors and an invigorating lifestyle





## *Experience life in Parra*

---

A prestigious neighborhood that has been a home to numerous prominent personalities.

Experience the epitome of luxury in Goa's most posh location.





Experience opulent interiors that  
redefine luxury living





Veera elevates the concept of  
luxurious living amidst nature by offering  
opulent villas, each graced with a  
**PRIVATE SWIMMING POOL**







4 Rooms  
Villa



Personal  
Swimming Pool



Parra -  
Posh Location



Premium  
Specifications



INDULGE IN LUXURIOUS  
EXPERIENCES WITH A TOUCH OF

*Heavenly Elegance*







More than mere space -  
a captivating emblem to dwell within

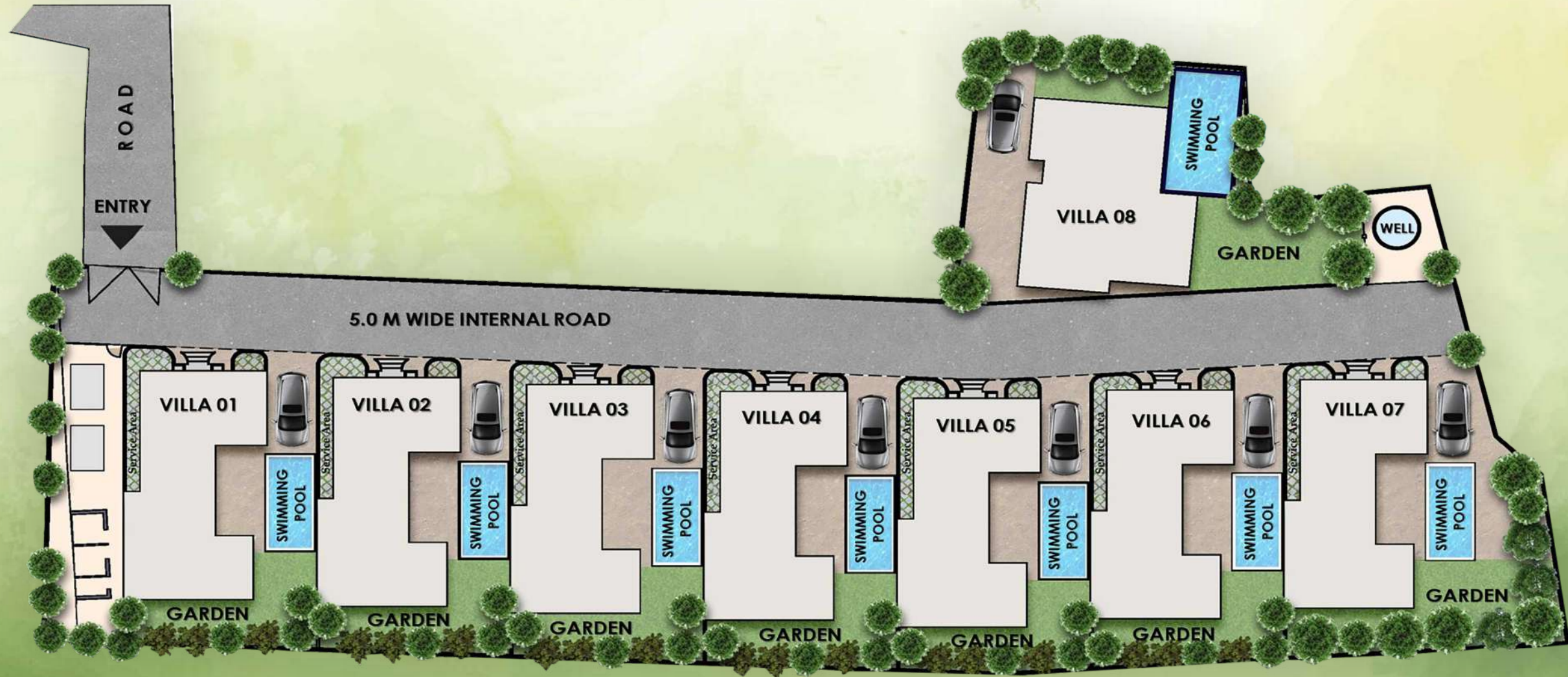








  
*Site Plan*



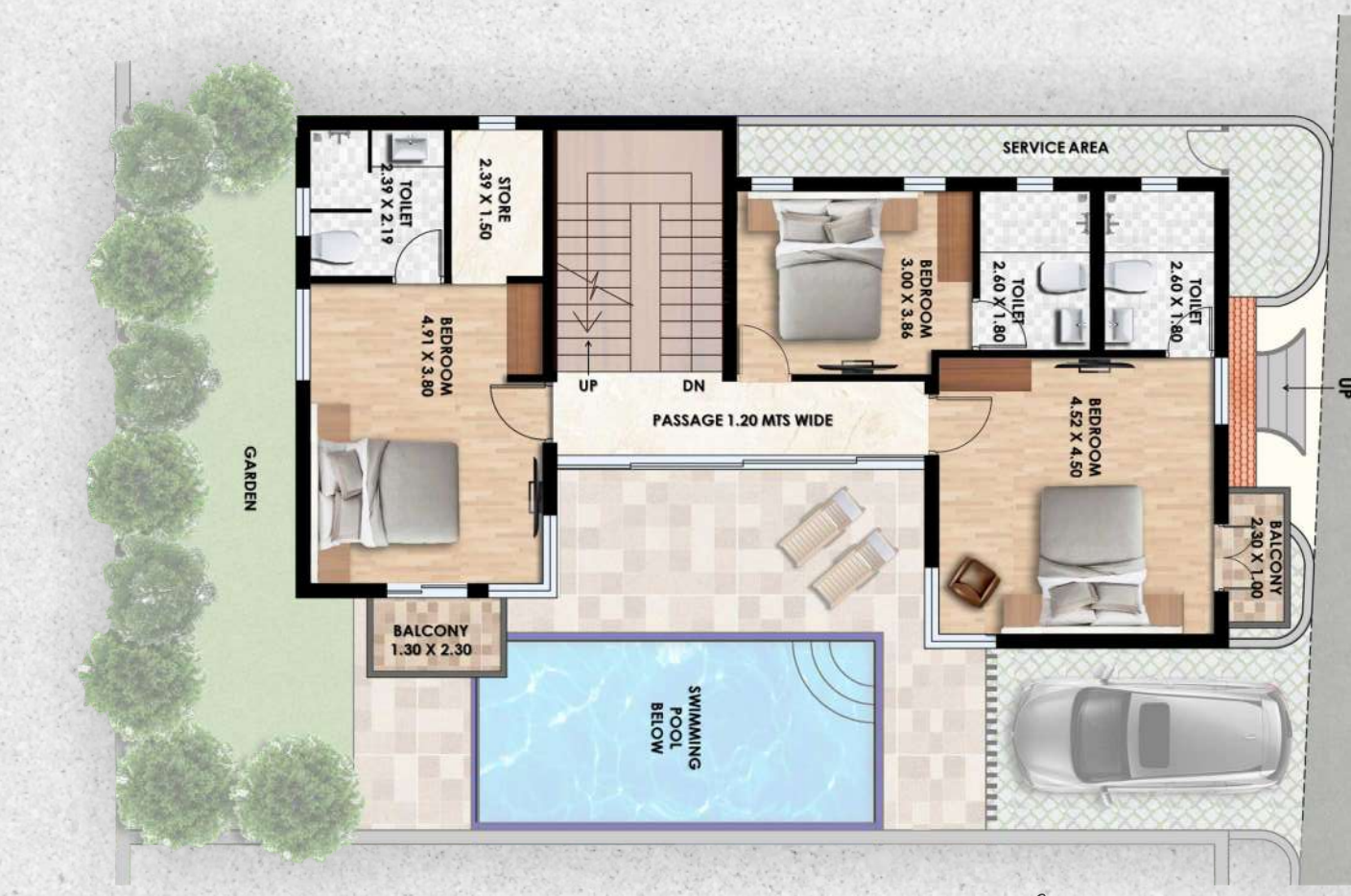




Ground Floor



*Villa*  
**TYPE A**  
(Villa No.: 1 - 7)



First Floor



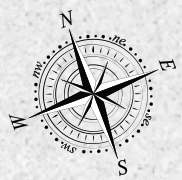
*Size*  
**3391 SQ. FT.**  
(315 SQ. MTR.)







Ground Floor

*Villa*  
TYPE B  
(Villa No.: 8)

*Size*  
4520 SQ. FT.  
(420 SQ. MTR.)

First Floor







\*Indicative map, not to scale



Location Map



Airconditioning : Daikin / Equivalent • LED Lighting : Jaquar / Equivalent

Kitchen : Modular Kitchen With Hob & Chimney

Wardrobes : Designer Wardrobes With Hettich / Equivalent Fittings

Frames of Door(s) / Window(s) : Teakwood

Doors : High Grade Flush Doors With Duco Paint

External Doors & Windows : UPVC / Wooden Windows

Bathroom CP Fittings : Grohe / Kohler / Equivalent

Sanitary Fixtures (W.C's & Washbasins) : Duravit / Kohler / Equivalent

Shower Cabins: Toughened Glass, Ozone / Dorma / Equivalent Fittings

Bathroom Vanities : Hettich / Equivalent Fittings

Plumbing Pipes : Astral / Prince / Equivalent

Internal Flooring : Branded Designer Tiles

Bathroom / Kitchen Wall Tiles : Branded Designer Tiles

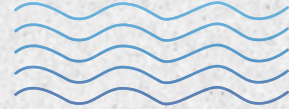
Electrical Wiring : Havells / Polycab / Equivalent

## Specifications





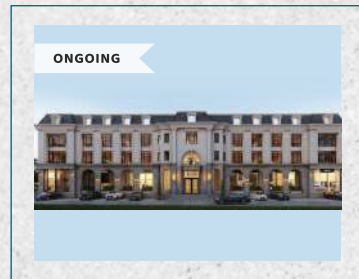
## Other Projects



Veera Eminence, Saipem



Veera's Fairfield by Marriott



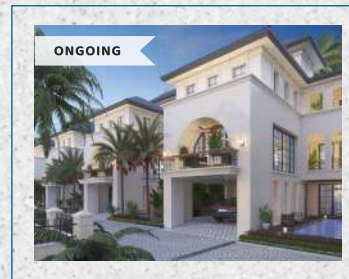
Veera Promenade, Porvorim



Veera Vaddo, Saligao



Veera Prestige, Candolim



Veera Savannah, Calangute



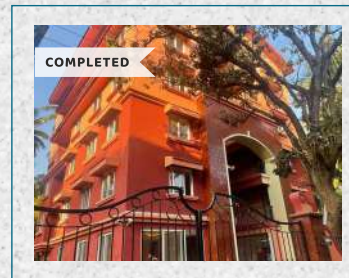
Veera Estate, Calangute



Veera Casa, Anjuna



Veera Strand Park, Calangute



Veera Harbor, Candolim



### VEERA DEVELOPERS GROUP

Site: Veera Ojas, S.No.: 170/19, Parra, Bardez, North Goa

Goa Office: Veera Strand Park, H.N.: 1/38, Gaura Waddo, Calangute, North Goa - 403516

Corp. Office: B - 3/58, Safdarjung Enclave, New Delhi-110029, India | Tel.: +91 11 26183234/5/6

Tel.: +91 9922078883 | [www.veeragroup.com](http://www.veeragroup.com) | [veera@veeragroup.com](mailto:veera@veeragroup.com)

The information and contents set out herein, including all services, infrastructure, facilities, features, designs, layout plans and technologies are based on projections and subject to change, without notice, at the sole discretion of the company.  
All images are artistic conceptualization for illustration only and do not purport to replicate the exact product(s). Club usage shall be subject to fulfillment of membership criterion. 1 Acre = 4046.825 sq. mtr. 1 sq. ft. = 0.09290304 sq. mtr.